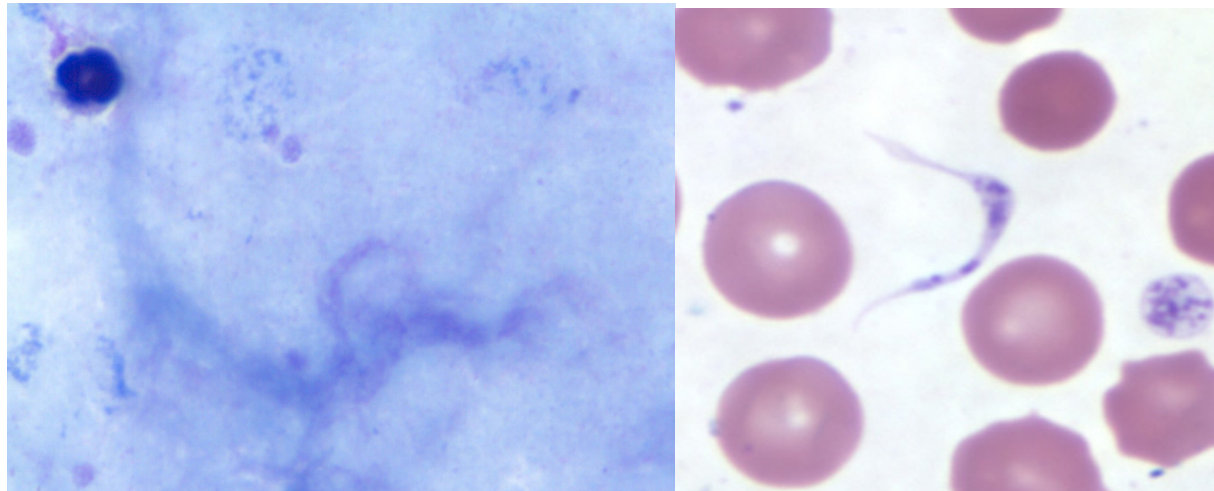


NHLS Blood Parasitology PT Scheme Clinical Scenarios 02/22

CHALLENGE:	CLINICAL HISTORY:	INSTRUCTIONS:
PB06/22 (Thick and Thin film)	A tourist who travelled to the Mozambique presents with fever, headache, and night sweats.	A thick and thin stained blood film has been sent to your laboratory; please examine the smear for parasites. If appropriate , perform a parasite count on your thin film and express your count as a percentage, to one decimal place.
PB07/22 (Thick and Thin film)	A 20-year-old South African female, complains of fever and sore throat after having been in a crowded soccer stadium.	You have been provided with a thin stained blood film. Please examine for parasites. If appropriate , perform a parasite count on your thin film and express your count as a percentage, to one decimal place.
PB08/22 (Thick and Thin film)	A traveller who attended the Durban July is admitted after a long weekend of celebrations with sore muscles.	You have been provided with a thin stained blood film. Please examine for parasites. If appropriate , perform a parasite count on your thin film and express your count as a percentage, to one decimal place.
PB09/10 (Thick and Thin film)	A patient complains of generalised malaise.	You have been provided with a thick and thin stained blood film. Please examine for parasites. If appropriate , perform a parasite count on your thin film and express your count as a percentage, to one decimal place.
PB10/22 (Paper challenge)	Blood slide from a patient who presented for routine testing.	Please examine the micrograph on the paper challenge (page 2) and record your response using answer codes.

PAPER CHALLENGE

PT Scheme: NHLS Blood PT Challenge number: PB10/22



Micrographs of Giemsa-stained of thick and thin blood films (x1000 oil magnification), for challenge: PB 10/22.