

NHLS Blood Parasitology PT Scheme

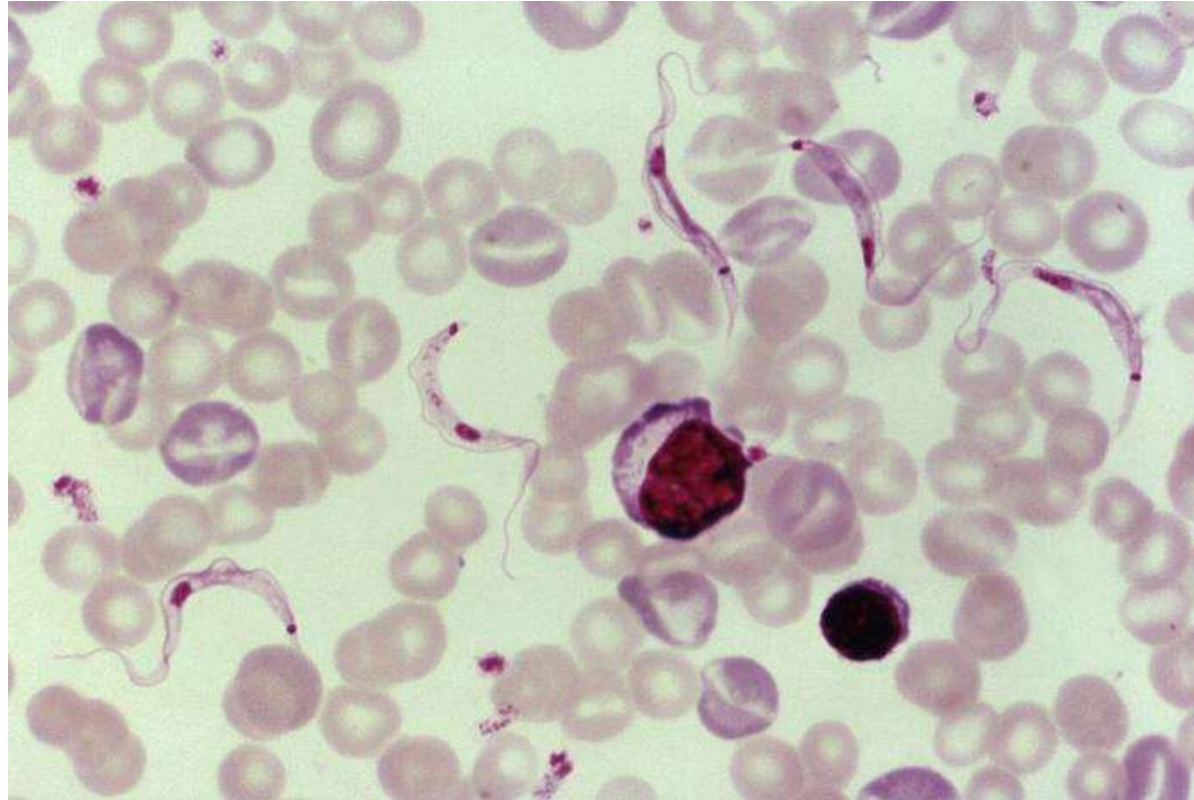
Clinical Scenarios 01/22

CHALLENGE:	CLINICAL HISTORY:	INSTRUCTIONS:
PB01/22 (Thick and Thin films)	Immunocompromised patient with fever and general malaise.	You have been provided with a thick and thin blood film. Please examine both films for parasites. Do not record separate answers for thick and thin films. If appropriate , perform a parasite count on your thin film and express your count as a percentage, to one decimal place.
PB02/22 (Thick and Thin films)	A mine worker presents with fever in Barberton, Mpumalanga Province.	You have been provided with a thick and thin blood film. Please examine both films for parasites. Do not record separate answers for thick and thin films. If appropriate , perform a parasite count on your thin film and express your count as a percentage, to one decimal place
PB03/22 (Thick and Thin films)	Party reveller presents with fever and chills.	You have been provided with a thick and thin blood film. Please examine both films for parasites. Do not record separate answers for thick and thin films. If appropriate , perform a parasite count on your thin film and express your count as a percentage, to one decimal place.
PB04/22 (Thin films)	39-year-old patient presenting with fever and mild anaemia.	You have been provided with a thick and thin blood film. Please examine both films for parasites. Do not record separate answers for thick and thin films. If appropriate , perform a parasite count on your thin film and express your count as a percentage, to one decimal place
PB05/22 (Paper Challenge)	Traveller from the Democratic Republic of Congo presents at the local casualty with severe headaches, irritability, extreme fatigue, swollen lymph nodes.	You have been provided with a paper challenge of a thin blood smear, please identify the parasite (see page 2)

NHLS Blood Parasitology PT Scheme

Clinical Scenarios 01/22

Paper Challenge: PB05/22



Submit results to parapts@nhls.ac.za / 086 225 2460 / the online result entry portal.