



SITUATIONAL REPORT No. 39

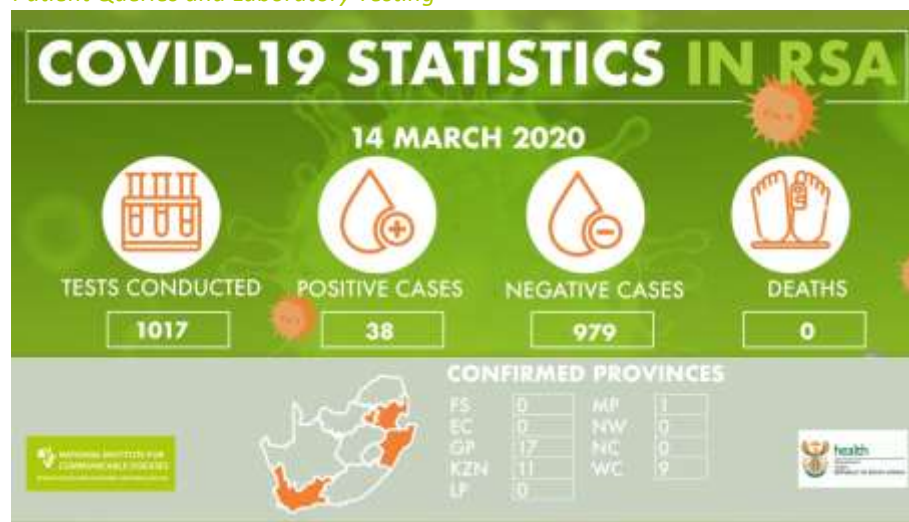
Recent Updates

- Hon. Dr Zwelini Mkhize announced that South Africa's COVID-19 case count had increased to 38. To date no deaths due to COVID-19 have been reported in South Africa, 14 March.
- Global confirmed case numbers are reported as 147 746, with 71 718 recovered and 5 539 deaths, 14 March <https://gisanddata.maps.arcgis.com/apps/opsdashboard/index.html#/bda7594740fd40299423467b48e9ecf6>
- The American government has decided to declare a national emergency as COVID-19 spreads across the country. The total number of confirmed cases in the country is 2 174 and 47 deaths, 14 March.
- Italy recorded 250 coronavirus deaths in a 24-hour period, the most in the country in a single day, as the number of COVID-19 fatalities there reached 1266. The total number of confirmed cases are now 17 660 with 1 266 deaths, 13 March.
- In Iran, SARS-CoV 2 has killed 97 people in the last 24 hours, pushing the death toll to 611. The total number of confirmed cases for the country is 12729, 14 March.
- On the African continent, Rwanda has become the latest country to report a case of SARS-CoV 2, 14 March. The patient is an Indian citizen who arrived in the East African nation from Mumbai on March 8, according to Rwanda's health ministry. He had no symptoms on arrival, but presented himself to a health facility on 13 March.
- Namibia has reported its first two cases of SARS-CoV 2, 14 March. The couple, from Spain, had arrived in the country on Wednesday 11 March.
- Five new countries/territories/areas (Jersey, Réunion, Saint Vincent and the Grenadines, Cuba and Guyana) have reported cases of COVID-19 in the past 24 hours.
- 122 countries have reported at least one Covid-19 case with 72 countries with local transmission.
- For the latest available global update from the World Health Organization, see the Situation Report 53 https://www.who.int/docs/default-source/coronaviruse/situation-reports/20200313-sitrep-53-covid-19.pdf?sfvrsn=adb3f72_2



Epidemiological Update for South Africa

Patient Queries and Laboratory Testing



Port Health Screening Updates

- 2 533 travelers from high risk area arrived in the past 24 hours.

Table 2: Travelers screened by thermal scanner monitoring at ports-of-entry in South Africa, 13 March 2020

Scanned Travelers	Passengers found with elevated temperature	Passengers screened and cleared	Passengers meeting COVID-19 suspected case criteria
^a 28 087	0	0	0

^a510 Travel health questionnaires completed by these travellers

Clinical Hotline Utilization Metric

Table 3: 24-hour clinical query hotline volumes and testing referrals in the past 24-hours, 14 March 2020

Line	Approximate Number of Calls	Number Persons Under Investigation	Number that Requiring Testing
First Phone	^a 53	10	10
Second Phone	^a 52	12	12
Third phone	No update available		

^a Approximation only; clinicians require multiple calls per person under investigation.

End