



NATIONAL HEALTH
LABORATORY SERVICE

GeneXpert MTB/RIF

Progress Report

July 2016





Table of Contents

Background to project	3
Assays performed to date	3
Correctional Services	5
Peri-Mining	6
mHealth and Linkage-to-Care Programme for MDR-TB	7
Rif Concordance	7
Training: Laboratory and Clinical	8
Challenges identified during the course of the project to date	8
Upcoming Plans	8
Publications	9

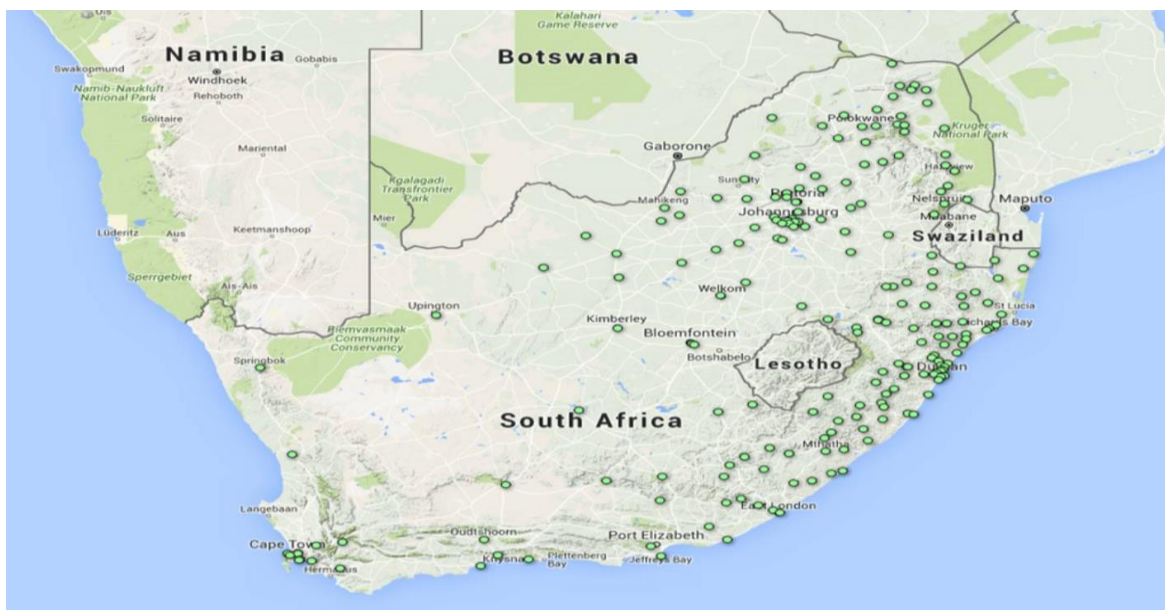
1. Background to Project

This project was initiated at the request of the Honorable Minister of Health, Dr Aaron Motsoaledi, in early 2011, following the World Health Organization's strong recommendation published in December 2010 which stated that "the new automated DNA test for TB be used as the initial diagnostic test in individuals suspected of MDR-TB or HIV/TB". In essence this comprises the majority of those with presumptive TB in South Africa.

The programme was further expanded to directly support the screening for TB and HIV in high risk populations in correctional centres and in peri-mining communities.

GeneXpert Placements

Figure 1: Current GeneXpert Placements (211 testing centers, 314 analysers, GX4: 115; GX16-8: 1; GX16: 189; GX48:1; GX80: 8)



2. Assays performed to date

In summary, a total of 9,002,717 specimens have been processed to date (31 July 2016). In July 2016 a total 205,587 specimens were processed. The total % of Mycobacterium tuberculosis complex (MTBC) detected in this cohort was 9.06% (18 628).

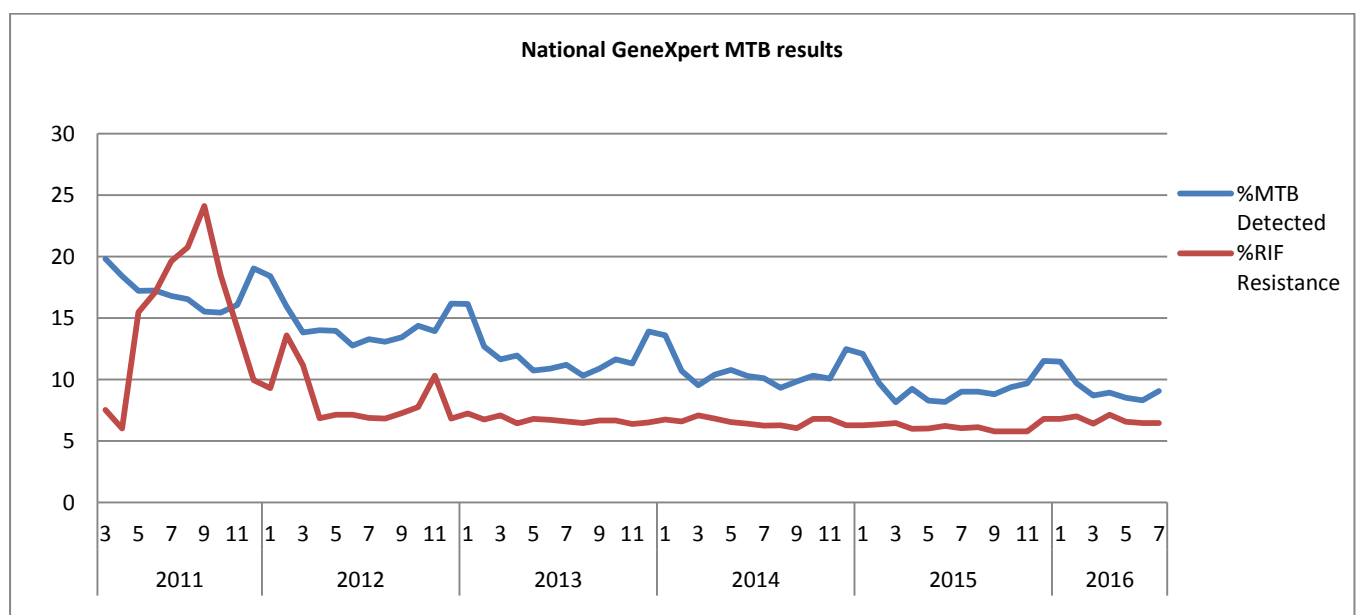
Table 1: National GeneXpert MTB Results (Cumulative)

Year	MTB Detected	MTB Not Detected	Test Unsuccessful	Total	% MTB Detected
2011	34 421	165 582	5 441	205 444	16.75
2012	93 248	544 109	16 903	654 260	14.25
2013	201 681	1 478 260	51 773	1 731 714	11.65
2014	249 014	2 060 754	62 038	2 371 806	10.50
2015	245 916	2 343 403	57 217	2 646 536	9.29
2016	126 975	1 237 322	28 660	1 392 957	9.12
Total	951 255	7 829 430	222 032	9 002 717	10.57

Table 2: National GeneXpert RIF Results (Cumulative)

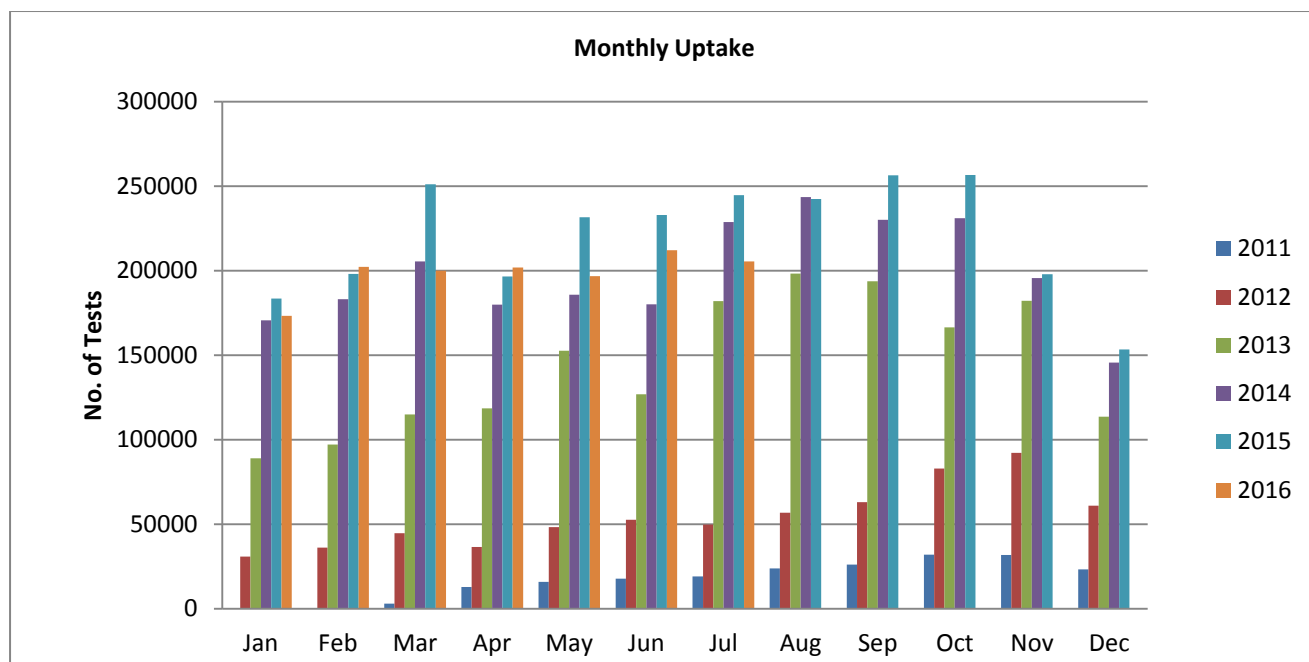
Year	Inconclusive	Resistant	Sensitive	No RIF Result	Total	% RIF Resistant
2011	311	5634	28171	305	34421	16.37
2012	1288	7809	83321	830	93248	8.37
2013	5122	13451	182015	1093	201681	6.67
2014	6068	16312	226254	380	249014	6.55
2015	3288	15043	227358	227	245916	6.12
2016	1515	8164	117169	127	126975	6.43
Total	17592	66413	864288	2962	951255	6.98

Figure 2: MTB Positivity and RIF Resistant rates overtime



4 Disclaimer: This is a dynamic specimen dataset requiring regular update and it should be noted that figures may change as linkages to individuals tested are updated.

Figure 3: GeneXpert Monthly Uptake



3. Correctional Services

In order to improve TB control in all 242 correctional facilities in South Africa, the NHLS is working in partnership with the Department of Correctional Services (DCS), NDoH, Aurum Institute, TB/HIV Care Association and Right to Care to ensure access to regular HIV- and TB-related screening, testing and treatment of up to 150,000 offenders through the Global Fund programme. Xpert MTB/Rif testing is being provided at either one of the 7 on-site labs, or at the nearest NHLS referral laboratory.

Total of 246,620 specimens have been processed to date (31 July 2016). The total % of Mycobacterium tuberculosis complex (MTBC) detected in this cohort was 4.49% (11,071).

Table 3: Correctional Service GeneXpert MTB Results (Cumulative)

Year	MTB Detected	MTB Not Detected	Test Unsuccessful	Total	% MTB Detected
Oct- Dec 2013	662	7 236	142	8 040	8.23
Jan- Dec 2014	3 620	55 995	1 004	60 619	5.97
Jan- Dec 2015	4 831	124 589	2 216	131 636	3.67
Jan -Jul 2016	1 958	43 451	916	46 325	4.23
Total	11 071	231 271	4 278	246 620	4.49

Table 4: Correctional Service GeneXpert RIF Results (Cumulative)

Year	Resistant	Inconclusive	Sensitive	No RIF Result	Total	% RIF Resistant
Oct- Dec 2013	27	7	626	2	662	4.08
Jan - Dec 2014	188	107	3 323	2	3620	5.19
Jan - Dec 2015	190	99	4 530	12	4831	3.93
Jan -Jul 2016	78	22	1 857	1	1958	3.98
Total	483	235	10 336	17	11 071	4.36

4. Peri-Mining Communities

NHLS, together with the Aurum Institute, has been appointed by NDoH (under the Global Fund grant) to provide services to implement interventions aimed at improving TB and HIV/AIDS management for vulnerable peri-mining communities (estimated at around 600,000 people) in 6 main mining districts. Six staffed and GeneXpert-equipped mobile TB units undertake Xpert MTB/RIF testing for TB in these communities.

A total of 58,367 specimens have been processed to date (31 July 2016). The total % of Mycobacterium tuberculosis complex (MTBC) detected in this cohort was 1.09% (638).

Table 5: Peri-mining GeneXpert MTB Results (Cumulative)

Year	MTB Detected	MTB Not Detected	Test Unsuccessful	Total	% MTB Detected
Jun to Dec 2014	55	2410	66	2531	2.17
Jan to Dec 2015	406	37021	609	38036	1.07
Jan to Jul 2016	177	17270	353	17800	0.99
Total	638	56701	1028	58367	1.09

Table 6: Peri-mining GeneXpert RIF Results (Cumulative)

Year	Inconclusive	Resistant	Sensitive	No RIF	Total	% Resistant
Jun to Dec 2014	3	2	51	0	56	3.57
Jan to Dec 2015	10	27	364	4	405	6.67
Jan to Jul 2016	7	13	151	6	177	7.34
Total	20	42	566	10	638	6.58

5. mHealth and Linkage-to-Care Programme for MDR-TB

Emocha (now called miLINC)

In 2015 a miLINC application was launched in South Africa to link thousands of patients afflicted with multi-drug resistant tuberculosis (MDR-TB) to specialised clinics for Care.

As of 31 March 2016, miLINC has screened over 7668 patients at 18 facilities. miLINC has linked 35/56 Rif Resistant patients into care in an average of 3 days and 8 hours.

Table 7: Summary from miLINC Dashboard (March 2015 to 10 February 2016)

*Provinces initiated	KZN, EC
Number of facilities initiated	28
Number of patients screened	8607
Rifampicin Resistant (R-R)	58(1%)
TB sensitive	10%
TB Negative	78%
R-R patients linked to care	35
Average time linked to care	3 days, 8 hours

Dashboard is currently only reporting on 18 facilities. The dashboard is still under construction. *Not all districts initiated.

6. RIF Concordance

A total of 54,225 Rif Resistant cases were reported between 1 March 2011 and 10 June 2016, 49% had a follow up confirmatory tests performed by either culture or LPA, of those there was a concordance of 86% for RIF resistance between GX and MGIT and 89% between GeneXpert and LPA.

Table 8: Rif Concordance by LPA or DST (from March 2011 to 10 June 2016)

Province	Rif Resistant Cases	GeneXpert Confirmation & Rif Concordance									
		MGIT					LPA				
		Confirmed		Rif Concordance		Pre-analytical /No result	Confirmed		Rif Concordance		Inderterminate
#	%	#	%	#	%		#	%			
Eastern Cape	10 399	390	3.8%	257	65.9%	3	3 565	34.3%	3 285	92.1%	18
Free State	3 069	224	7.3%	122	54.5%	0	980	31.9%	801	81.7%	189
Gauteng	7 583	267	3.5%	183	68.5%	4	1 939	25.6%	1 733	89.4%	31
Kwazulu-Natal	16 423	4 575	27.9%	4265	93.2%	0	4 724	28.8%	4 228	89.5%	188
Limpopo	2 449	93	3.8%	70	75.3%	2	624	25.5%	495	79.3%	20
Mpumalanga	3 923	803	20.5%	788	98.1%	0	1 483	37.8%	1 280	86.3%	4
North West	2 880	257	8.9%	179	69.6%	0	928	32.2%	727	78.3%	55
Northern Cape	1 674	331	19.8%	251	75.8%	3	701	41.9%	537	76.6%	35
Western Cape	5 825	227	3.9%	81	0.0%	0	4 611	79.2%	4 232	91.8%	3
National	54 225	7 167	13.2%	6 196	86.5%	12	19 555	36.1%	17 318	88.6%	543

*table generated quarterly in order match GX RESULTS with follow up confirmatory tests

7. Training: Laboratory and Clinical

A total of 2,096 laboratory staff and 11,088 health care workers have been trained since December 2011. This will be an ongoing process to support NDoH training on clinical algorithm. Laboratory staff received both clinical and technical training.

Table 9: Health Care workers trained for July 2016

Province	District	Facilities Trained	No. of Participants
Mpumalanga	Gert Sibande	Piet Retief Hospital	27
Mpumalanga	Nkangala	Middelburg	57

8. Challenges identified during the month of July 2016

- None

9. Upcoming plans

- Roll out Roll out of Xpert MTB/RIF Ultra assay towards the end of 2016
- Continuous monitoring of sites through remote connectivity to improve program performance
- Development of the GeneXpert dashboard to improve program performance

- Recruitment of additional trainers to maximize service provided for NHLS labs and NDoH

10. Publications

- None