



NATIONAL HEALTH
LABORATORY SERVICE

GeneXpert MTB/RIF

Progress Report

December 2016





Table of Contents

Background to project	3
Assays performed to date	3
Correctional Services	5
Peri-Mining	6
mHealth and Linkage-to-Care Programme for MDR-TB	7
Training: Laboratory and Clinical	7
Rejected specimens	8
Challenges identified during the course of the project to date	9
Upcoming Plans	9
Publications	9

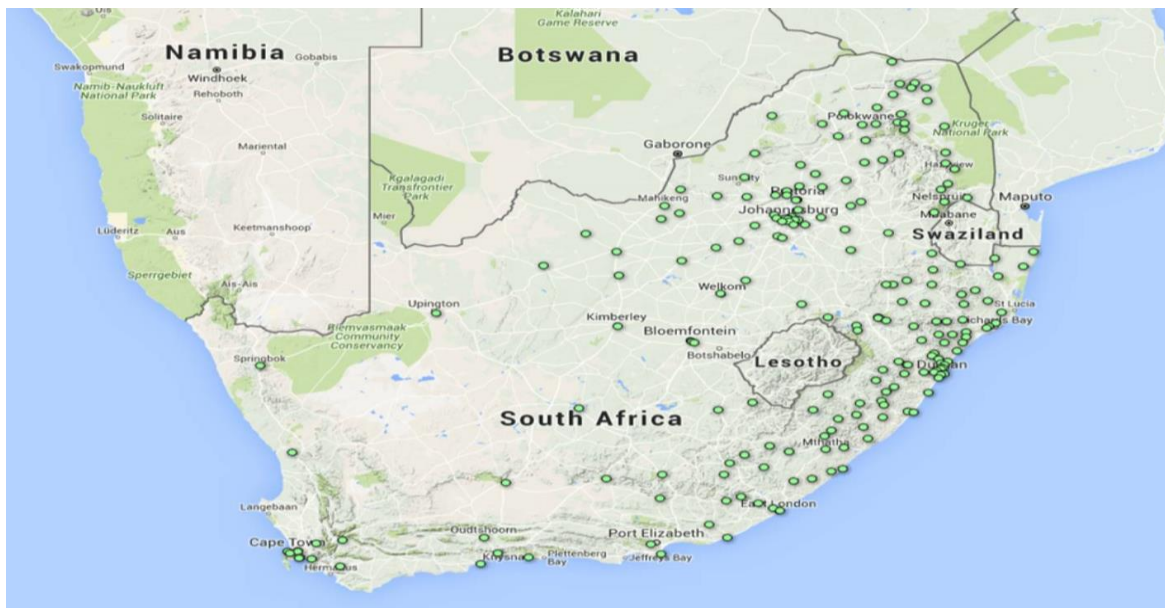
1. Background to Project

This project was initiated at the request of the Honorable Minister of Health, Dr Aaron Motsoaledi, in early 2011, following the World Health Organization’s strong recommendation published in December 2010 which stated that “the new automated DNA test for TB be used as the initial diagnostic test in individuals suspected of MDR-TB or HIV/TB”. In essence this comprises the majority of those with presumptive TB in South Africa.

The programme was further expanded to directly support the screening for TB and HIV in high risk populations in correctional centres and in peri-mining communities.

GeneXpert Placements

Figure 1: Current GeneXpert Placements (207 testing centers, 314 analysers, GX4: 115; GX16-8: 1; GX16: 189; GX48:1; GX80: 8)



2. Assays performed to date

In summary, a total of 10,021,291 specimens have been processed to date (31 December 2016). In December 2016 a total 134,385 specimens were processed. The total % of Mycobacterium tuberculosis complex (MTBC) detected in this cohort was 11.49% (15 447).

Table 1: National GeneXpert MTB Results (Cumulative)

Year	MTB Detected	MTB Not Detected	Test Unsuccessful	Total	% MTB Detected
2011	34 421	165 582	5 441	205 444	16.75
2012	93 248	544 109	16 903	654 260	14.25
2013	201 681	1 478 260	51 773	1 731 714	11.65
2014	249 014	2 060 754	62 038	2 371 806	10.50
2015	245 916	2 343 403	57 217	2 646 536	9.29
2016	223 129	2 139 914	48 488	2 411 531	9.25
Total	1 047 409	8 732 022	241 860	10 021 291	10.45

Table 2: National GeneXpert RIF Results (Cumulative)

Year	Inconclusive	Resistant	Sensitive	No RIF Result	Total	% RIF Resistant
2011	311	5 634	28 171	305	34 421	16.37
2012	1 288	7 809	83 321	830	93 248	8.37
2013	5 122	13 451	182 015	1 093	201 681	6.67
2014	6 068	16 312	226 254	380	249 014	6.55
2015	3 288	15 043	227 358	227	245 916	6.12
2016	2 386	13 796	206 745	202	223 129	6.18
Total	18 463	72 045	953 864	3 037	1 047 409	6.88

Figure 2: MTB Positivity and RIF Resistant rates overtime

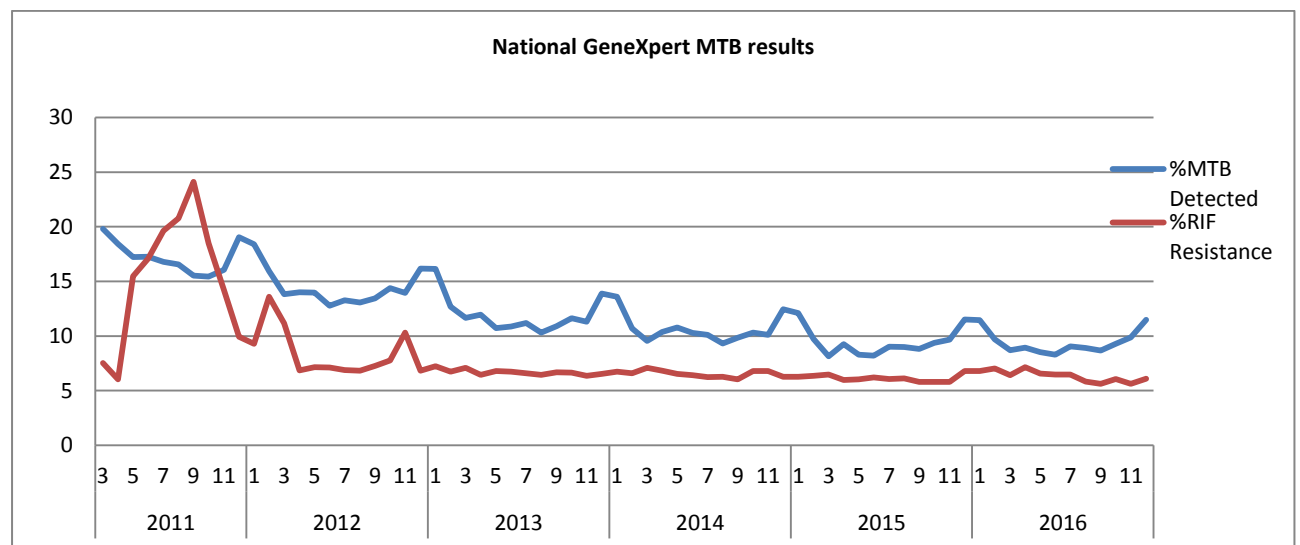
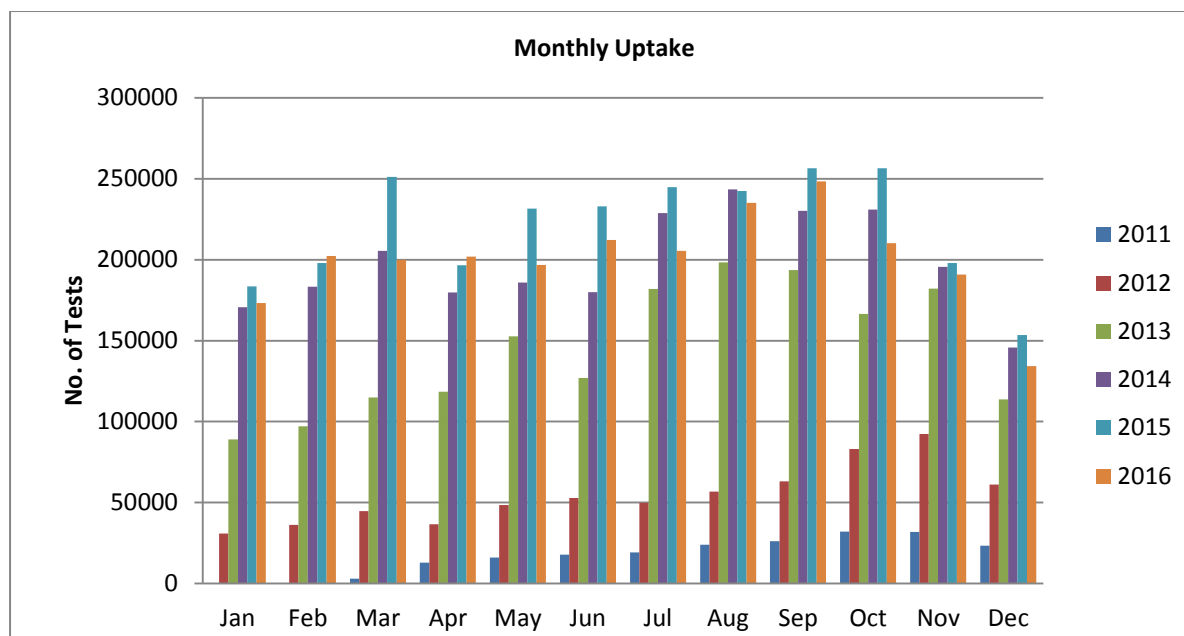


Figure 3: GeneXpert Monthly Uptake



3. Correctional Services

In order to improve TB control in all 242 correctional facilities in South Africa, the NHLS is working in partnership with the Department of Correctional Services (DCS), NDoH, Aurum Institute, TB/HIV Care Association and Right to Care to ensure access to regular HIV- and TB-related screening, testing and treatment of up to 150,000 offenders through the Global Fund programme. Xpert MTB/Rif testing is being provided at either one of the 7 on-site labs, or at the nearest NHLS referral laboratory.

Total of 272,939 specimens have been processed to date (31 December 2016). The total % of Mycobacterium tuberculosis complex (MTBC) detected in this cohort was 4.56% (12,446).

Table 3: Correctional Service GeneXpert MTB Results (Cumulative)

Year	MTB Detected	MTB Not Detected	Test Unsuccessful	Total	% MTB Detected
Oct- Dec 2013	662	7236	142	8040	8.23
Jan- Dec 2014	3620	55995	1004	60619	5.97
Jan- Dec 2015	4831	124589	2216	131636	3.67
Jan -Dec 2016	3333	68003	1308	72644	4.59
Total	12446	255823	4670	272939	4.56

Table 4: Correctional Service GeneXpert RIF Results (Cumulative)

Year	Resistant	Inconclusive	Sensitive	No RIF Result	Total	% RIF Resistant
Oct- Dec 2013	27	7	626	2	662	4.08
Jan - Dec 2014	188	107	3323	2	3620	5.19
Jan - Dec 2015	190	99	4530	12	4831	3.93
Jan -Dec 2016	149	35	3146	3	3333	4.47
Total	554	248	11625	19	12446	4.45

4. Peri-Mining Communities

NHLS, together with the Aurum Institute, has been appointed by NDoH (under the Global Fund grant) to provide services to implement interventions aimed at improving TB and HIV/AIDS management for vulnerable peri-mining communities (estimated at around 600,000 people) in 6 main mining districts. Six staffed and GeneXpert-equipped mobile TB units undertake Xpert MTB/RIF testing for TB in these communities.

A total of 65,623 specimens have been processed to date (31 December 2016). The total % of Mycobacterium tuberculosis complex (MTBC) detected in this cohort was 1.09% (718).

Table 5: Peri-mining GeneXpert MTB Results (Cumulative)

Year	MTB Detected	MTB Not Detected	Test Unsuccessful	Total	% MTB Detected
Jun to Dec 2014	55	2410	66	2531	2.17
Jan to Dec 2015	406	37021	609	38036	1.07
Jan to Dec 2016	257	24289	510	25056	1.03
Total	718	63720	1185	65623	1.09

Table 6: Peri-mining GeneXpert RIF Results (Cumulative)

Year	Inconclusive	Resistant	Sensitive	No RIF	Total	% Resistant
Jun to Dec 2014	3	2	51	0	56	3.57
Jan to Dec 2015	10	27	364	4	405	6.67
Jan to Dec 2016	9	15	225	8	257	5.84
Total	22	44	640	12	718	6.13

5. mHealth and Linkage-to-Care Programme for MDR-TB

Emocha (now called miLINC)

In 2015 a miLINC application was launched in South Africa to link thousands of patients afflicted with multi-drug resistant tuberculosis (MDR-TB) to specialised clinics for Care.

As of 31 March 2016, miLINC has screened over 7668 patients at 18 facilities. miLINC has linked 35/56 Rif Resistant patients into care in an average of 3 days and 8 hours.

Table 7: Summary from miLINC Dashboard (March 2015 to 10 February 2016)

*Provinces initiated	KZN, EC
Number of facilities initiated	28
Number of patients screened	8607
Rifampicin Resistant (R-R)	58(1%)
TB sensitive	10%
TB Negative	78%
R-R patients linked to care	35
Average time linked to care	3 days, 8 hours

Dashboard is currently only reporting on 18 facilities. The dashboard is still under construction. *Not all districts initiated.

6. Training: Laboratory and Clinical

A total of 2,189 laboratory staff and 11,938 health care workers have been trained since December 2011. This will be an ongoing process to support NDoH training on clinical algorithm. Laboratory staff received both clinical and technical training.

Table 9: Laboratory staff trained for November 2016

Date	District	Laboratory	No of Participants
5/12/2016	Gert Sibande	Evander	1
7/12/2016	Gert Sibande	Piet Retief	2



7. Rejected Specimens

Rejections of GeneXpert specimens mostly occur as a result of Clerical errors (incorrect labelling and or incomplete request forms), cancellations (clinical errors), unsuitable specimens and insufficient volumes. In December, 5 762 (4.29%) specimens were rejected. On-going training remains a practical tool to guarantee improvement in specimen collection and labelling.

Figure 4: Rejections rate (Jan to Dec 2016)

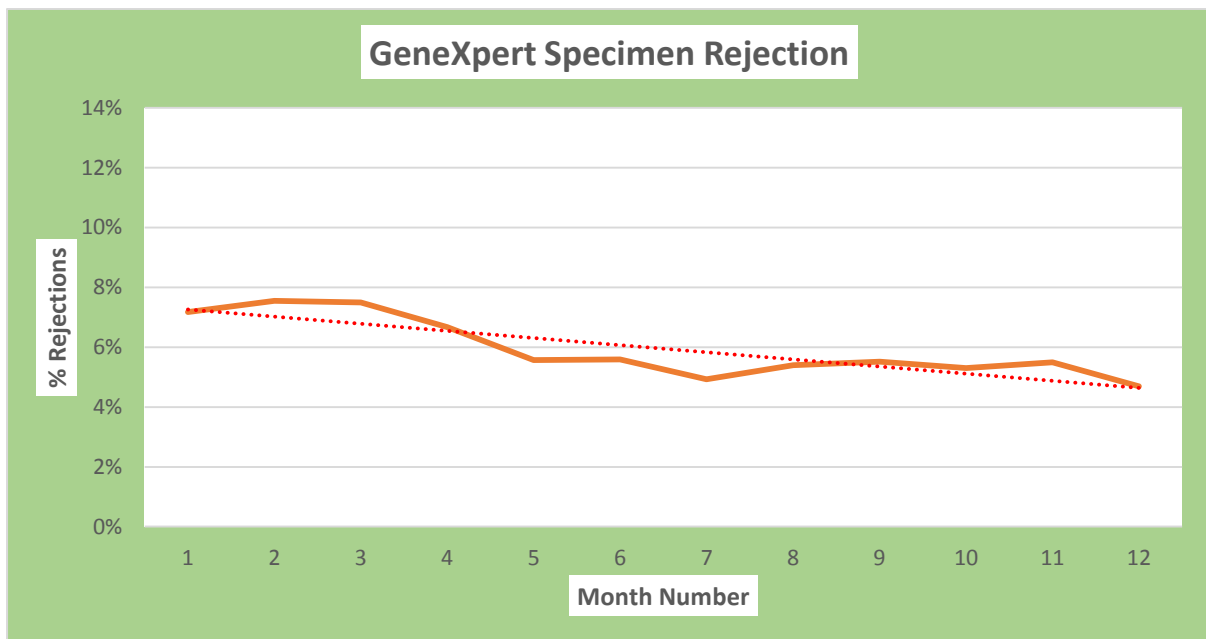
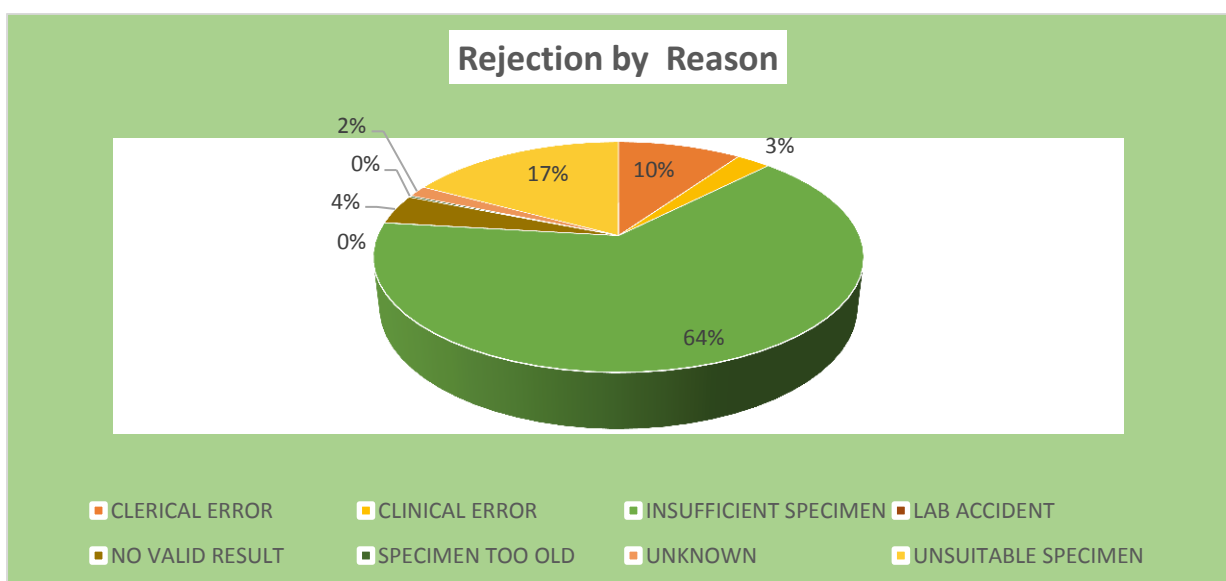


Figure 5: Rejections by reason



8. Challenges identified during the month of December 2016

- None

9. Upcoming plans

- Roll out Roll out of Xpert MTB/RIF Ultra assay.
- Continuous monitoring of sites through remote connectivity to improve program performance.
- Development of the GeneXpert dashboard to improve program performance.
- Recruitment of additional trainers to maximize service provided for NHLS labs and NDoH.

10. Publications

- None